



Enforcement and Inspection Method

AKA

Inspections, Complaints, and Enforcement

Robert van den Akker

Stormwater Quality Program Supervisor

Quality and Compliance Division

Maricopa County Environmental Services Department



Maricopa County Environmental Services Department

**Working with our community
to ensure a safe and healthy environment**

VISION STATEMENT:

As the recognized regional environmental leader, we will develop and foster innovative environmental health protection programs for the safety of our residents and their environment.

MISSION STATEMENT:

The mission of the Environmental Services Department is to provide safe food, water, waste disposal and vector borne disease reduction controls to the people of Maricopa County so that they may enjoy living in a healthy and safe community.

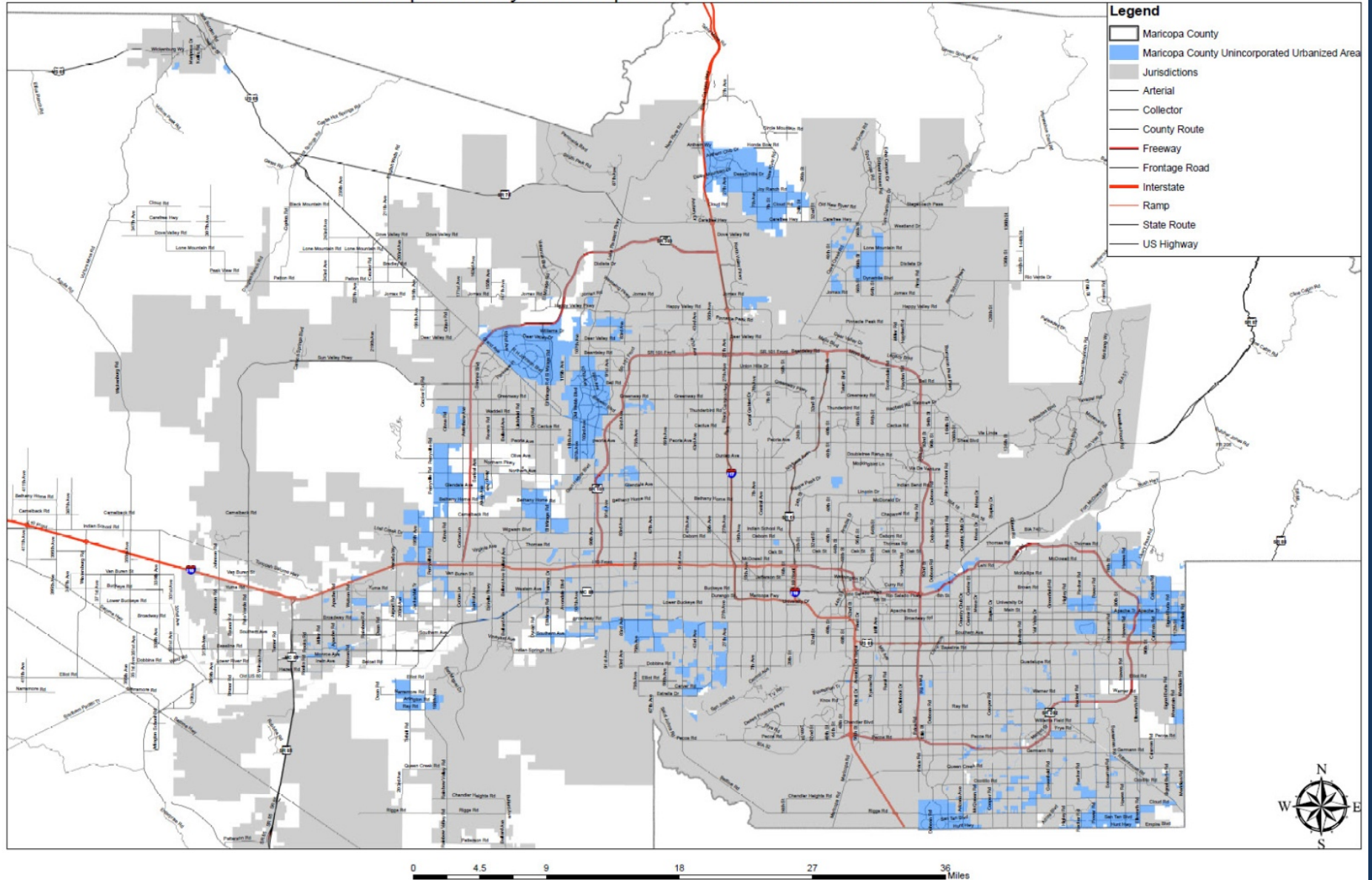
Training Objectives

- Understand
 - MC SWQP Authority
 - Inspection activities
 - Enforcement ability
 - Take home idea

Maricopa County

- Phase II Permittee
- Urbanized Unincorporated Area

Maricopa County Unincorporated Urbanized Area - Census 2010



SWMP / MCM

1. Public education
2. Public participation
3. Illicit discharge detection and elimination
4. Construction site stormwater runoff control
5. Post-construction stormwater management
6. Pollution prevention for municipal operations

SWMP / MCM

1. Public education
2. Public participation
3. Illicit discharge detection and elimination
4. Construction site stormwater runoff control
5. Post-construction stormwater management
6. Pollution prevention for municipal operations

Authority

- Stormwater Quality Regulation
 - Maricopa County Stormwater Quality Management and Discharge Control Regulation
- Health Code
 - Maricopa County Environmental Health Code

Stormwater Quality Regulation

- Prohibits pollutants to the storm system
- Covers the UUA
- Provides enforcement ability

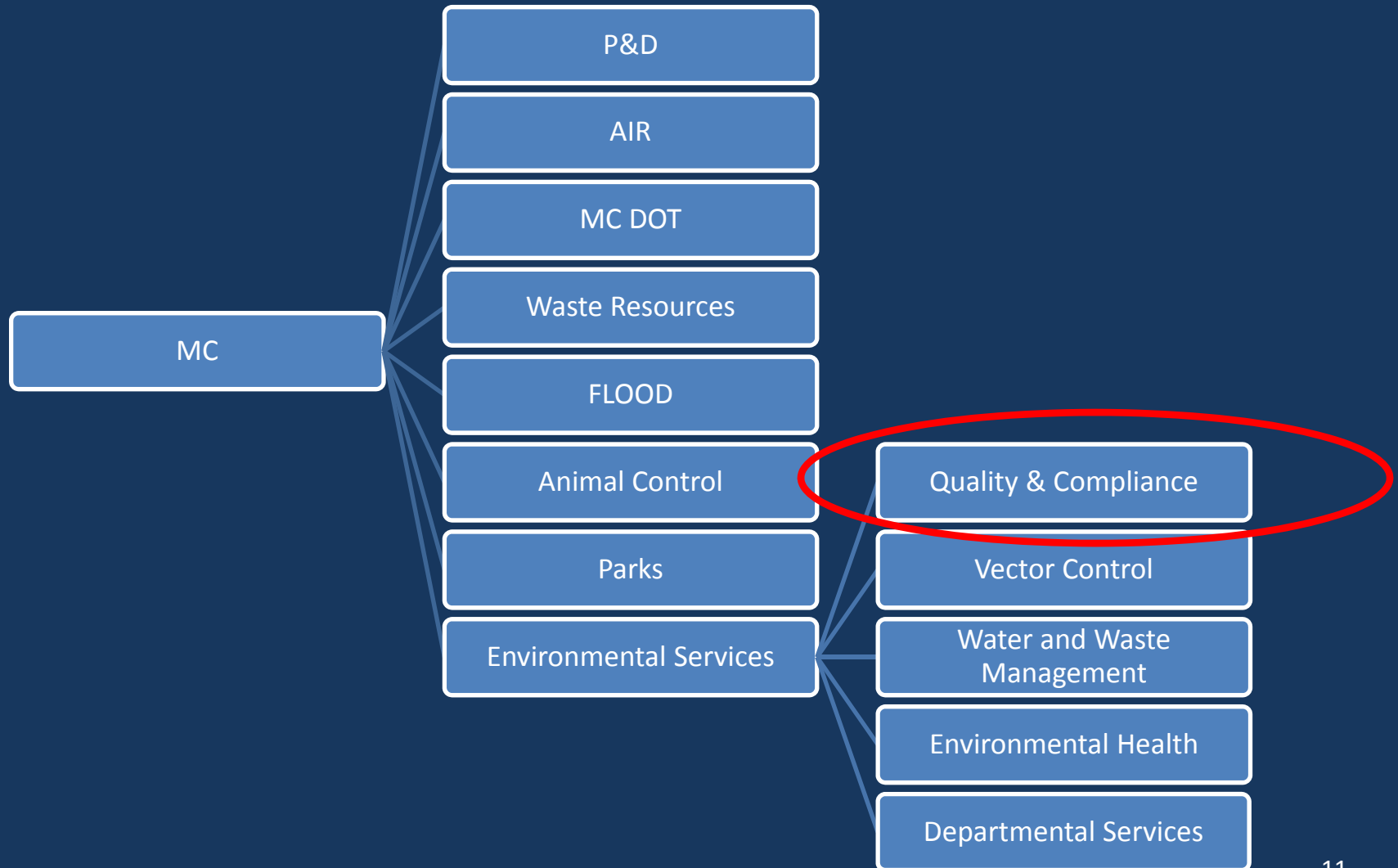


Health Code

- Prohibits pollutants to any water and any drainage system
- Covers the entire county
- Provides enforcement ability



Maricopa County



Quality and Compliance Division



Enforcement Program Scope



Why an Enforcement Program?



Enforcement

- Serve the entire Department
- Standardized Process
- Consistency in Procedure

Quality and Compliance Division



Inspections

- Pro-Active
- Construction
- Complaint Response

Inspections

- Pro-Active
 - Known areas (MCM3)
 - Historic “Resolved” Complaints
 - Commercial
 - Municipal Operations and MS4 (MCM6)
 - Permitted Stormwater Structures (MCM5)
- Complaints (MCM3)
- Construction - E&S control (MCM4)

Inspections

- Pro-Active
- Complaints (MCM3)
 - In house or from the public
 - 5 days or less response time
- Construction (MCM4)
 - Initial
 - Follow-up



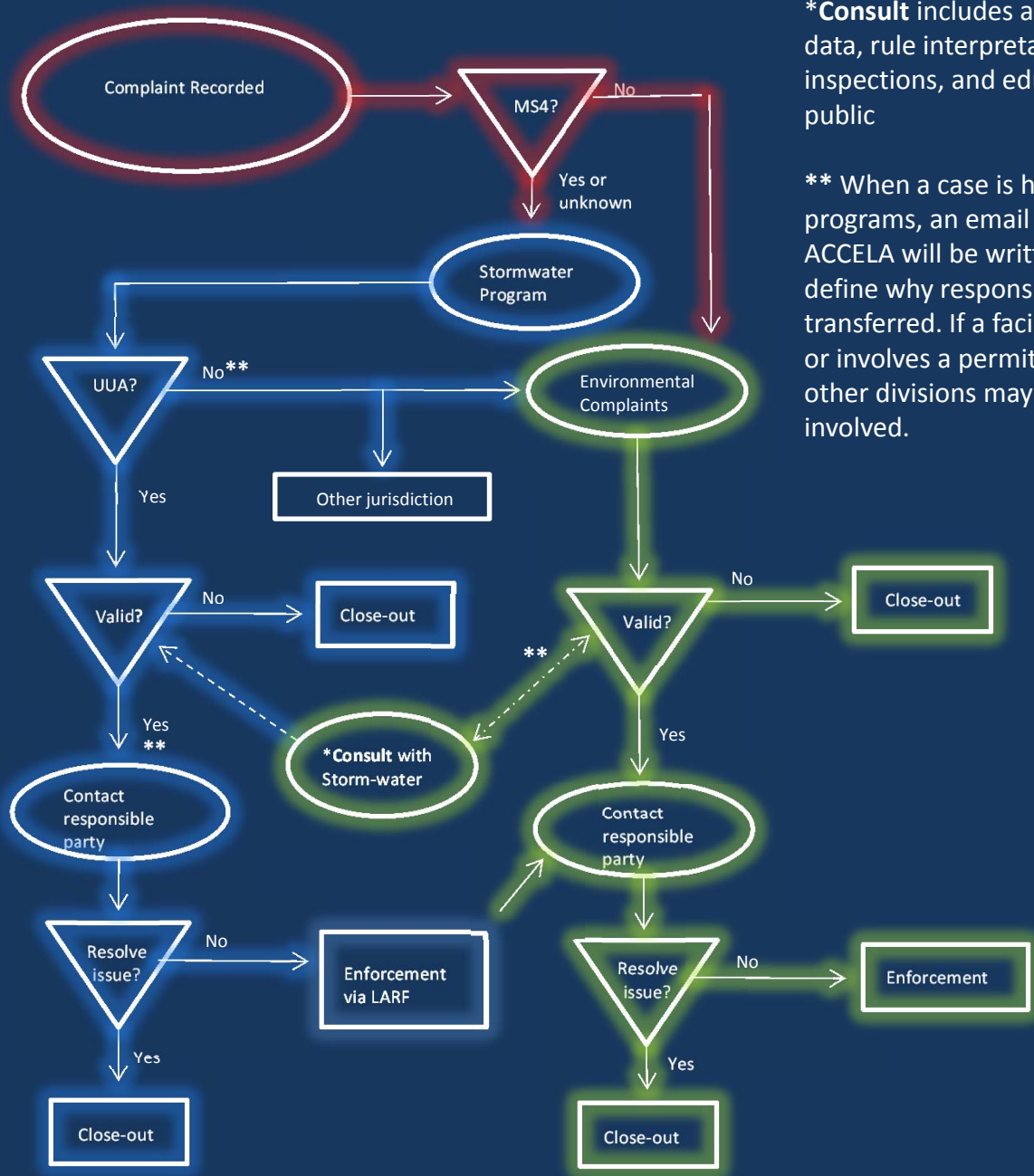
Complaint Process

Color key:

Environmental Complaints Program

Complaint Line

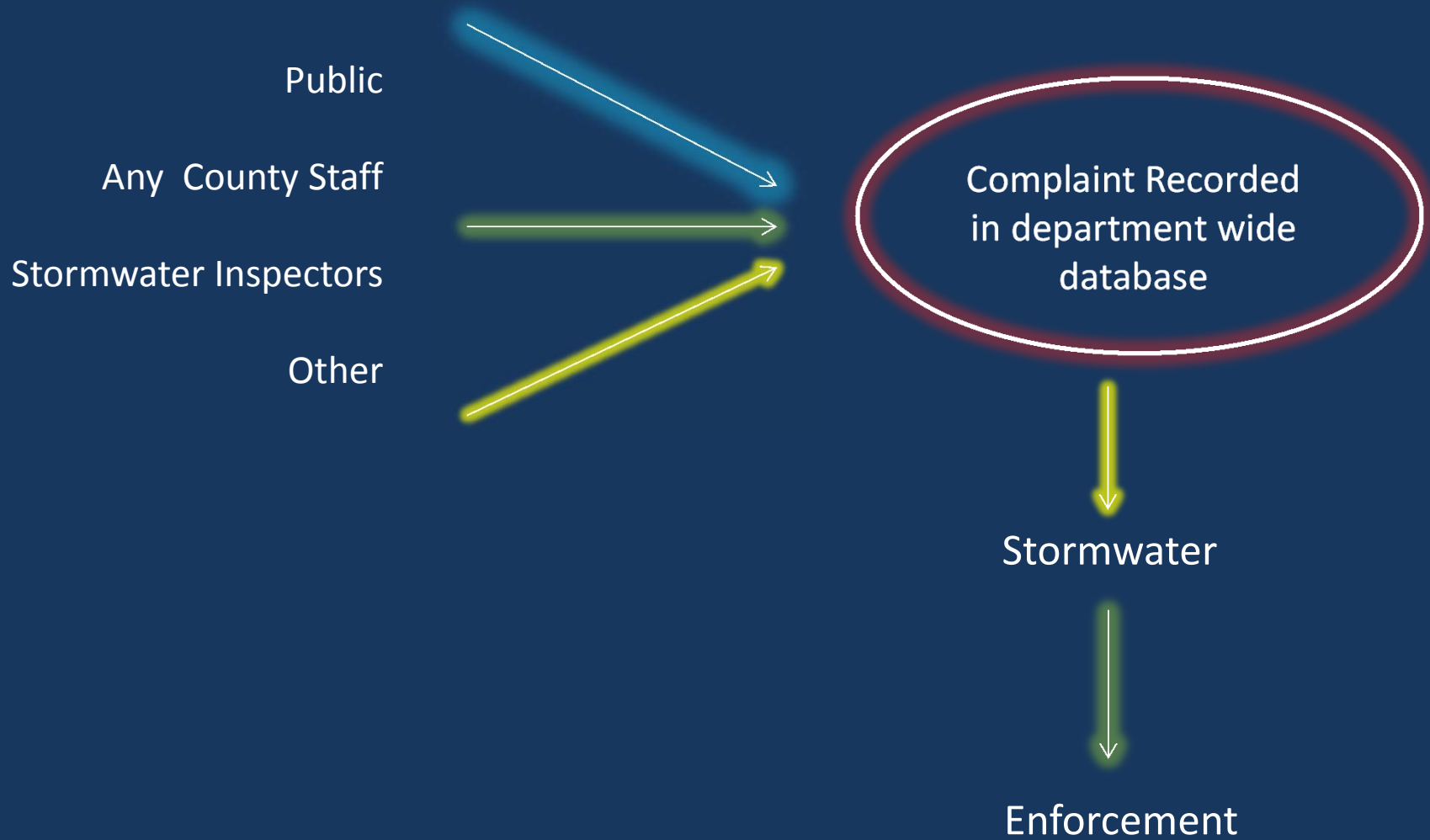
Stormwater Program



***Consult** includes assistance with data, rule interpretation, inspections, and education to the public

****** When a case is handed between programs, an email and notes in ACCELA will be written to clearly define why responsibility has been transferred. If a facility is permitted or involves a permitted operation, other divisions may need to be involved.

Complaint Process



Stormwater Quality Regulation

- 1001 – Violations
- 1002 – Letter of Outstanding Violation
- 1003 – Consent Order
- 1004 – Compliance Order
- 1005 – Cease and Desists Order
- 1006 – Injunctive Relief
- 1007 – Suspension and Revocation of Approvals or Permits
- 1008 – Civil Penalties
- 1009 – Criminal Violations
- 1010 – Abatement Assessment and Lien

Stormwater Quality Regulation

- **1001 – Violations**
- **1002 – Letter of Outstanding Violation**
- 1003 – Consent Order
- 1004 – Compliance Order
- 1005 - Cease and Desists Order
- 1006 - Injunctive Relief
- 1007 – Suspension and Revocation of Approvals or Permits
- 1008 – Civil Penalties
- 1009 – Criminal Violations
- 1010 – Abatement Assessment and Lien

Inspection

- **Violation Observed**
 - Investigate
 - Educate
 - Declare a violation
- **Letter of Outstanding Violation**
- **Responsible Party Action**
 - Respond with clarity or cease the discharge
 - Do nothing

Enforcement

- LAR -Legal Action Request form
 1. Detailed time line
 2. Pictures
 3. Property ownership information
 4. Maps and aerial pictures

Quality and Compliance Division



Stormwater Quality Regulation

- 1001 – Violations
- 1002 – Letter of Outstanding Violation
- **1003 – Consent Order**
- **1004 – Compliance Order**
- **1005 – Cease and Desists Order**
- **1006 – Injunctive Relief**
- **1007 – Suspension and Revocation of Approvals or Permits**
- **1008 – Civil Penalties**
- **1009 – Criminal Violations**
- **1010 – Abatement Assessment and Lien**

Enforcement

- **Administrative Hearings**
 - Uniform Administrative Process
 - Administrative Law Judge
 - Court Reporter/or audio recorder

Enforcement

- **Court Action**
 - State court
 - a trial
 - **Guilty or Not Guilty**
 - penalties imposed by judge.

Take home idea

- **Have a Code**
- **Have a written process**
- **Train staff**

Take home idea

- **Administrative Buy In**
 - Create code and authority
 - Commitment to enact process
- **Supervisory Buy In**
 - Create process
 - Educate staff
 - Ensure staff follow procedure / process
- **Staff Buy In**
 - Knowledge
 - Tools
 - Boots on the ground

Illicit Discharge



Contact The Stormwater Program

Robert van den Akker, RS, CPM, CPO

Stormwater Program Supervisor | Stormwater Quality Program

Maricopa County Environmental Services Department

15023 N. 75th Street | Scottsdale, AZ 85260

Cell: **602.525.1799** | Fax: 480.483.5009

Email: **rvandenakker@mail.maricopa.gov** | esd.maricopa.gov



Questions?

